

Beyond The Limit of Sight

Made for excellence



FOTRIC 600 *Series*

Fixed-mount infrared camera

FOTRIC 600 Series

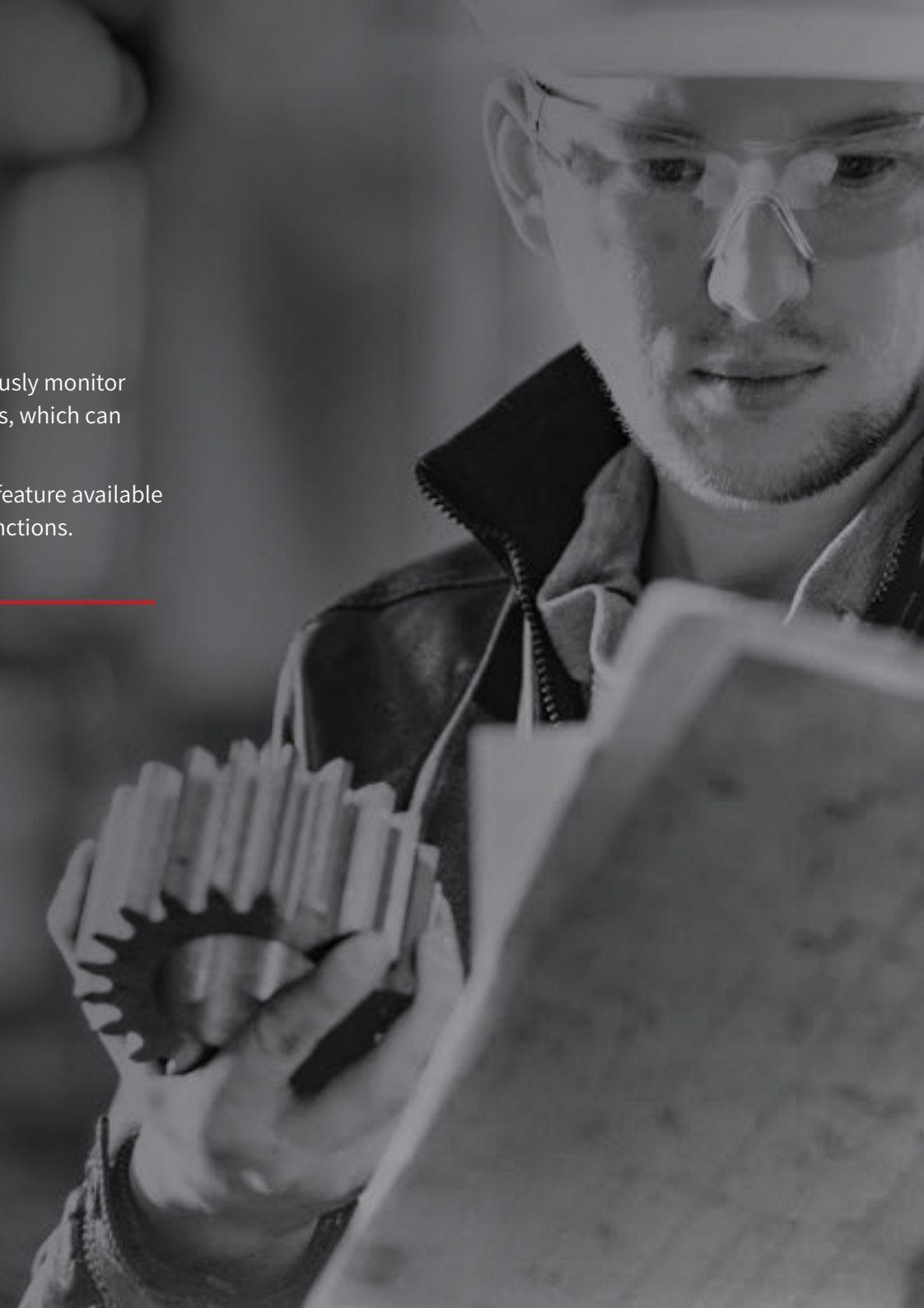
Fixed-mount infrared camera

The FOTRIC 600 series infrared camera can automatically and continuously monitor and record temperature anomaly in accordance with user's preset rules, which can help optimize industrial process and reinforce quality control;

Users also have access to with a series of sophisticated online analysis feature available in FOTRIC's AnalyzIR and open API SDK for customized features and functions.

Main Application

- Research and development;
- Industrial processing;
- Perimeter security;
- Warehouse fire-prevention;



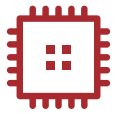


Product Features

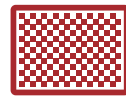
- Support a wide variety of configuration, complying with every scenario.
- Support radiometric video output, providing robust temperature data for analysis
- Maximum temperature range expandable to 2000°C
- Compliant with multiple data transmission protocols, adaptive for connection integration



World Class Suppliers



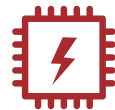
Mother board chip from
SAMSUNG



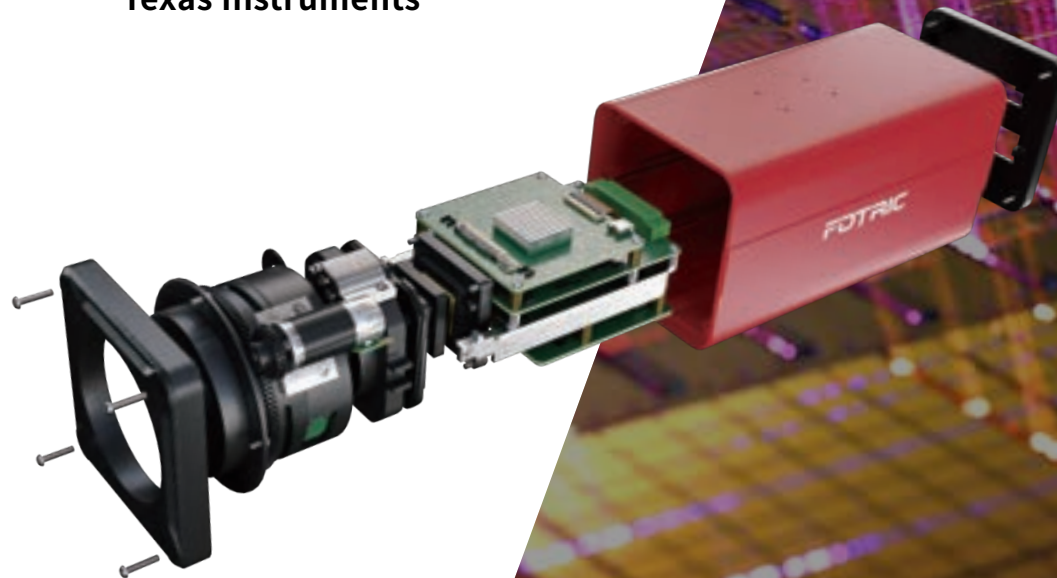
Infrared detector from
Lynred



FPGA from
Xilinx



Power supply chip from
Texas Instruments





Lively Image Accurate Measurement

640*480

Max thermal resolution

$\pm 2^{\circ}\text{C}/\pm 2\%$

Accuracy

30Hz

Radiometric video stream

30mK

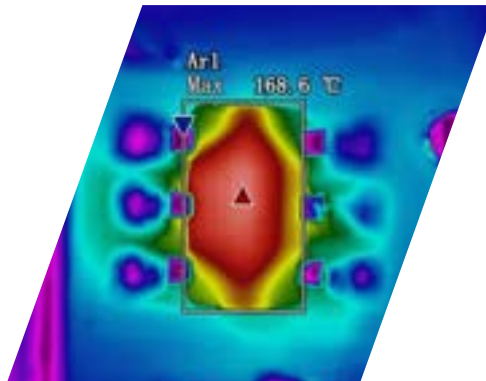
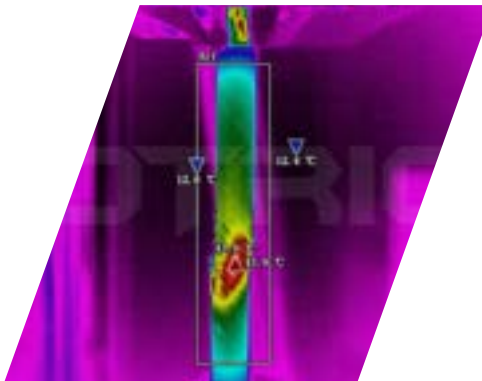
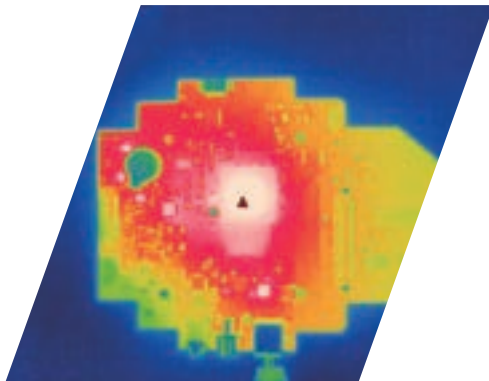
Thermal sensitivity

$-20^{\circ}\text{C}\sim 2000^{\circ}\text{C}$

Largest temperature range

5spots 10lines 10areas

Measurement tools



More Options; More Liberty



Multiple available models

Support resolution of 640*480、384*288、320*240 and 160*120, fulfilling every need from different environments



Abundant lens options

Support 25°×18.7°、50°×37.5°、12°×8.9°、7°×5.2° lenses, see the world from different angles

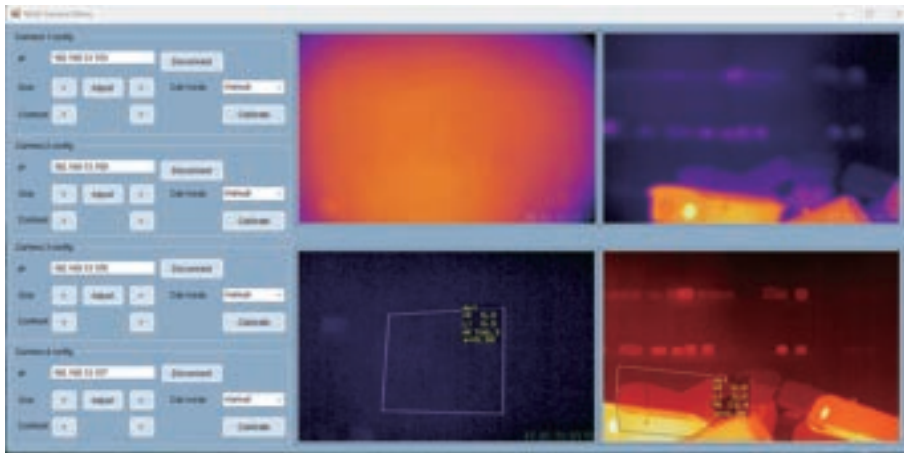


Open source API software

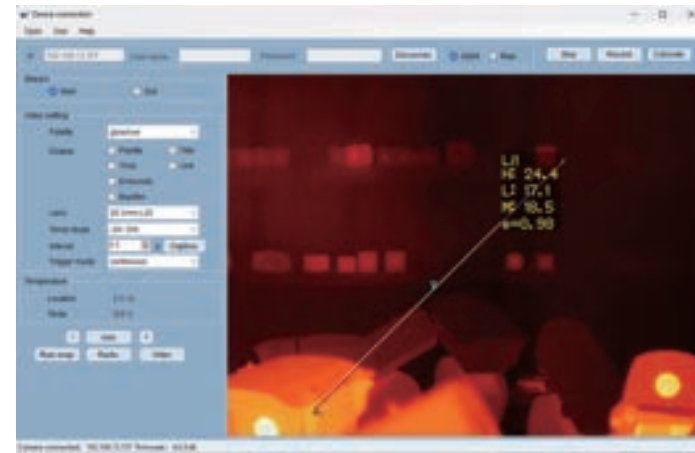
The FOTRIC SDK offers users the possibility to create softwares tailored to their needs



Short programs for capacity demonstration



MC demo: Multiple camera connection and streaming capability



DL demo: Image and video capture, display information adjustment



TA demo: ROI setting and temperature alarm trigger



Rest demo: Command list to control the camera, cornerstone of the SDK

Specification

Model	628CH	626CH	628C	626C	625C	618C	616C	615C	613C
Basic Parameters									
Thermal resolution	640*480	384*288	640*480	384*288	320*240	640*480	384*288	320*240	160*120
Detector type	Uncooled focal plane array detector								
Thermal sensitivity	<30mk	<50mk	<30mk	<50mk	<50mk	<30mk	<50mk	<50mk	<60mk
Detector pitch	17μm								
Spectral range	7.5μm-14μm								
FOV	Dependent on the lens configuration								
IFOV	Dependent on the lens configuration								
Minimum focus distance	Dependent on the lens configuration								
Focal distance	Dependent on the lens configuration								
Focus type	Automatic					Manual			
Measurement Analysis									
Temperature range	-20°C-150°C 0°C-650°C 300°C-2000°C	-20°C-150°C 0°C-650°C 300°C-2000°C	-20°C-150°C 0°C-650°C	-20°C-150°C 0°C-650°C	-20°C-150°C 0°C-350°C	-20°C-150°C 0°C-650°C	-20°C-150°C 0°C-650°C	-20°C-150°C 0°C-350°C	-20°C-150°C 0°C-350°C
Accuracy	±2°C/±2%								
Measurement parameters	Emissivity; Ambient temperature; Reflected temperature; Relative humidity; Distance; External optics compensation								
Partial emissivity	Support								
Image display									
Palettes	10 standard palettes and 10 inverted palettes								
Image process	Non-uniform calibration, digital enhancement								
Mirror mode	Left-right, up-down, center								
Video compression	H.264								
Radiometric stream	<30mk	<50mk	<30mk	<50mk	<50mk	<30mk	<50mk	<50mk	<60mk
Pan-tilt-zoom station compatibility	Support Pelco-D protocol								
Measurement tools	5 points, 10 lines and 10 regions, support Modbus output								
Software	AnalyzeIR; Open API FOTRIC SDK								

Specification

Model	628CH	626CH	628C	626C	625C	618C	616C	615C	613C
Network Connection									
Ethernet type	10M/100M/1000M adaptive								
Network protocols	IPv4, UDP, TCP, RTSP, RTCP, RTP								
Simultaneous stream	Mainstream and substream: 10; Radiometric stream: 1								
IP connection interface	ONVIF								
Electrical connection									
Power connector	Screw-on wire terminal								
Network connector	Screw-on RJ45 with status indicator LED								
Alarm input/output	1 relay output, load capacity:24V, 1.5A; 1 optocoupler output:Voltage:3.3-24V, Max current: 35mA; 1 optocoupler input:Voltage:3.3-24V, Input current : 5mA-15mA								
Serial port	RS-485								
Power system									
Power supply	12V/24V DC, PoE								
Power consumption	4W	3W	4W	3W	3W	4W	3W	3W	3W
Reliability and certificates									
Safety standards	GB 4943.1-2011 EN 62368-1:2014+A11:2017;GB/T 19870-2018								
Electromagnetic compatibility	GB/T 18268.1-2010 EN 61326-1:2013 GB 17625.1-2012 EN IEC 61000-3-2:2019 GB/T 17625.2-2007 EN 61000-3-3:2013/A1:2019 GB/T 19870-2018 GB 4824-2019 EN 55032:2015/A11:2020 EN 55035:2017 FCC CFR47 Part15 subpart B								
Protection level	IP40								
Impact	25g, GB/T 2423.5-2019 IEC 60068-2-27:2008								
Vibration	2g, GB/T 2423.10-2008 IEC 60068-2-6:2007								
RoHS compliant	Directive 2011/65/EU and amendment (EU) 2015/863								

Specification

Model	628CH	626CH	628C	626C	625C	618C	616C	615C	613C
Physical parameters									
Working temperature	-20°C-65°C								
Storage temperature	-40°C-70°C								
Relative humidity	<90%								
Size(mm)	164.6*80*79 (standard lens)	157.25*80*79 (standard lens)	142.25*71*70 (standard lens)			112*68*60 (without lens)			
Weight (g)	993 (standard lens)	713 (standard lens)	718 (standard lens)	706 (standard lens)		485 (without lens or base)			
Outer casing material	Aluminum alloy								

Optional lenses

Model	Parameters	Standard lens	Wide-angle lens	Telephoto lens
628CH	FOV	25°* 19°	50°* 38°	12°* 9°
	I FOV	0.68mrad	1.36mrad	0.33mrad
	Minimum focus distance	0.5m	0.7m	5m
	Focal distance	25.3mm	-12.2mm	-53.9mm
626CH	FOV	25°* 19°	50°* 38°	12°* 9°
	I FOV	1.14mrad	2.27mrad	0.55mrad
	Minimum focus distance	0.5m	0.5m	1.5m
	Focal distance	15mm	7.34mm	-32.2mm
628C	FOV	25°* 19°	50°* 38°	12°* 9°
	I FOV	0.68mrad	1.36mrad	0.33mrad
	Minimum focus distance	0.3m	0.3m	1m
	Focal distance	25mm	13mm	50mm
626C	FOV	25°* 19°	50°* 38°	12°* 9°
	I FOV	1.14mrad	2.27mrad	0.55mrad
	Minimum focus distance	0.3m	0.3m	1m
	Focal distance	15mm	8.2mm	-30mm
625C	FOV	21°* 16°	42°* 31°	10°* 7°
	I FOV	1.14mrad	2.27mrad	0.55mrad
	Minimum focus distance	0.3m	0.3m	1m
	Focal distance	15mm	8.2mm	-30mm

Model	Parameters	Standard lens	Wide-angle lens	Telephoto lens	Super wide-angle lens
618C	FOV	29°* 22°	45°* 34°	18°* 13°	92°* 74°
	I FOV	0.79mrad	1.23mrad	0.49mrad	2.51mrad
	Minimum focus distance	0.1m	0.3m	1m	0.3m
	Focal distance	21.6mm	14mm	35mm	5.8mm
616C	FOV	30°* 22°	47°* 35°	15°* 11°	91°* 71°
	I FOV	1.36mrad	2.14mrad	0.68mrad	4.14mrad
	Minimum focus distance	0.3m	0.3m	2m	0.3m
	Focal distance	13mm	8mm	25mm	3.7mm
615C	FOV	25°* 18°	39°* 29°	13°* 9°	76°* 59°
	I FOV	1.36mrad	2.14mrad	0.68mrad	4.14mrad
	Minimum focus distance	0.3m	0.3m	2m	0.3m
	Focal distance	13mm	8mm	25mm	3.7mm
613C	FOV	28°* 21°	50°* 38°	-	-
	I FOV	3.05mrad	5.45mrad	-	-
	Minimum focus distance	0.1m	0.1m	-	-
	Focal distance	5.56mm	3.13mm	-	-

Innovation Excellence Integrity

Equipment described herein may require EU, US and UNSC authorization for export purposes.

Imagery for illustration purposes only.

Specifications are subject to change without notice.

FOTRIC INC. All Rights reserved.

Update 23/03/20

info@fotric.com

www.fotric.com