

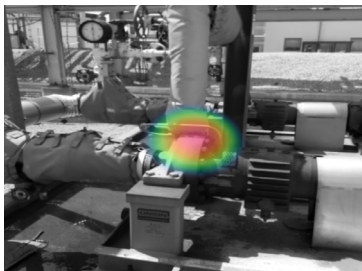
# EXPLOSION PROOF ACOUSTIC IMAGING

## REDUCE LOSSES CAUSED BY GAS LEAKS AND PARTIAL DISCHARGE

Constructed with 128 individual microphones, the ATEX certified explosion-proof Sound Detect Pro leverages ultrasonic frequencies and microphone array beamforming technology to quickly detect potential air, gas, and vacuum leaks in noisy industrial environments. Also find partial discharge faults from electrical devices. The Sound Detect Pro displays information related to partial discharge type, estimated leak size, and earnings loss values. The camera also comes with a built-in processor that pinpoints a leak's location on-screen. Real-time sound image display, assists users in detecting hazards significantly faster compared to previous methods. Does not include Wi-Fi or Bluetooth.



Sound Detect Pro



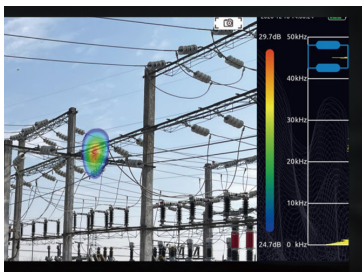
## HIGH-PERFORMANCE MICROPHONES

128 digital MEMS microphones can provide exceptionally high sensitivity and accuracy. With built-in processing capabilities, leaks are instantly displayed on a 7" color touchscreen, allowing for real-time analysis and solutions oriented problem solving. The Sound Detect Pro also features anti-jamming technology to assist users in detecting leaks. Its ATEX certified explosion proof rating allows the device to be used in extreme environments.



## INTUITIVE DESIGN

Adjust two parameters to effortlessly detect and locate low level noise caused by equipment failures, even in the loudest industrial environments. Made of durable aluminum, the Sound Detect Pro is designed to be sturdy and lightweight. The acoustic imager is also extremely easy to use and requires little-to-no training.



## ANALYTICS AND REPORTS

The Sound Detect Pro features camera and video modes as well as data recording. The large-capacity data storage can be expanded and the test results can be quickly exported. Report analysis software generates editable ISO 50001-compliant documents in Excel format.



The Sound Detect for acoustic image management and signal analysis uses 128 microphones to locate precise acoustic sounds and visualizes them on a 7" color touchscreen. More sensitive and accurate than the human ear, the Sound Detect Pro can locate both audible and ultrasonic signals, as well as source the direction of a sound up to 132.5 dB at ~120 m (394') distance. Upgrade to Pro for an ATEX certified explosion-proof system.

## Features

- 128 MEMS microphones to detect more, faster
- Enhanced vibration monitoring and sound localization
- ISO 50001-compliant documents in Excel format
- ATEX certified explosion-proof (Pro version)
- Real-time sound visualization
- View single or multiple sound sources
- Environmental indoor/outdoor
- 7" color touchscreen, 1024 x 600
- Text annotation up to 5 notes
- View photos and videos

## Applications

- Gas leak detection
- Plant/General maintenance
- Partial discharge
- Home/building Inspections
- Acoustic applications

## Options & Accessories

- Battery bank (optional)
- ATEX certified explosion-proof (Pro version)
- USB Cable
- 8 GB Micro-SD card
- 1/4"-20 tripod support (built-in)



Sound Detect Pro

Competitor



Lighter, Thinner, and more Versatile

## Specifications

- **Acoustic Measurement:** 128 MEMS microphones
- **Dynamic range:** 0.5 dB - 12 dB, up to 132.5 dB
- **Bandwidth:** 2 kHz to 48 kHz, settings dependent
- **Distance:** 0.3 m (1.0 ft), up to ~120 m (394')
- **Operation Range:** -20°C to 50°C (-4°F to 122°F)
- **Storage Range:** -20°C to 40°C (-4°F to 104°F)
- **Humidity:** 10% to 95%, relative
- **Dimensions:**
  - 272 mm x 174 mm x 42 mm (L x W x D ± 0.5 mm)
  - (10.7" x 6.9" x 2.8" (L x W x H ± 0.02"))
- **Weight:** 1.7 kg (3.75 lbs)
- **Battery:** rechargeable Li-ion, 15 W; battery bank available
- **Operation Time:** 4-6 hours (conditions dependent)
- **Charging Time:** 4-6 hours
- **Power Management:** sleep/auto off
- **Interface:** USB Type-C, 3.5 mm jack
- **Video Format:** MP4, up to 5 minutes
- **Video Frame Rate:** 25 fps (minimum)
- **Image Format:** JPG
- **Image Polarity:** 3 options
- **Audio Format:** WAV
- **Storage:** 8 GB SD (up to 256 GB)
- **Screen:** 7" color touchscreen, 1024 x 600
- **Brightness:** adjustable
- **Digital Camera:** 8 MP, 3 mm fixed focus, 62° FOV
- **Zoom:** 2x digital zoom
- **IP Rating:** IP54
- **Certifications:** ATEX Level II 3G Ex ic IIC T5 Gc
- **Language:** multi-language
- Text annotation up to 5 notes
- Support leakage evaluation
- One-click report generation
- Real-time sound visualization
- Health self-diagnostic test function
- Template-based report building
- No Wi-Fi or Bluetooth